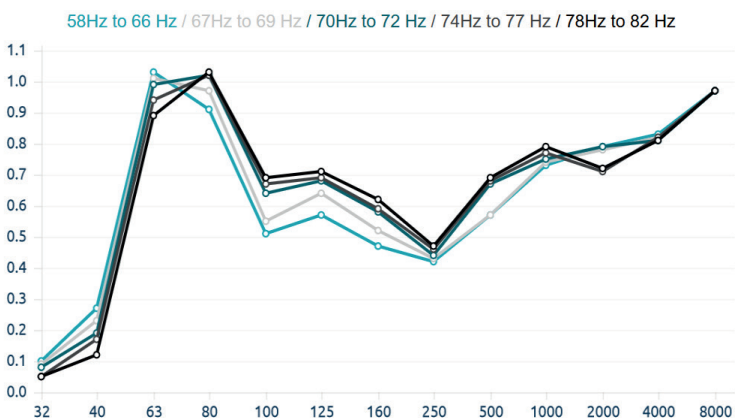


New fine-tuning possibilities.

The Corner bass trap is the latest in low frequency absorption. This elegant panel integrates a tuneable membrane over a sealed volume, containing a high performance acoustic core. A secondary compartment positions Helmholtz resonators in the high pressure zone of the room. The panel is completely tuneable, by means of an adjustable weighted membrane, allowing to pin-point the performance of the panel to a target frequency.

The panels' tuneable membrane works in a similar way to a speaker cone, allowing for a much superior - and controlled - performance. A central mass is supported by an elastic membrane - This mass can then be altered to change the resonant frequency of the membrane, stepping the peak performance of the Trap from 58 to 82 Hz.

**Performance**



**Features**

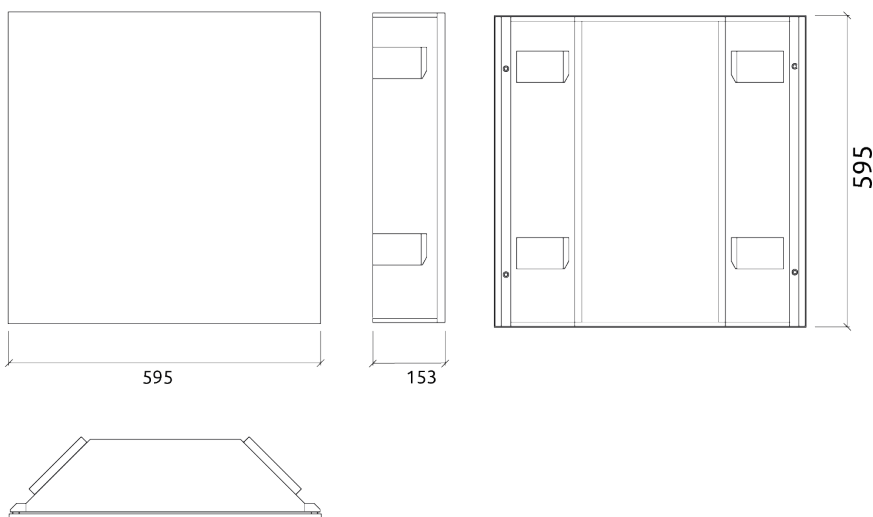
Type:  
Tuneable Pistonic Diaphragmatic Absorber  
Tuneable absorption range: 58Hz to 82Hz.

.Tuneable weighted diaphragmatic membrane  
.Hz-by-Hz fine tuning  
.New fine-tuning possibilities.

Material:  
- Acoustic fabric  
- Marine grade plywood structural frame  
- Calibrated cell acoustic foam

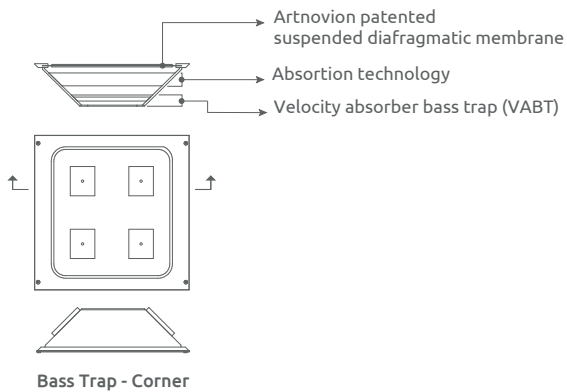
This panels can only be installed on vertical wall corners. Not for ceiling use.

**Technical Information**



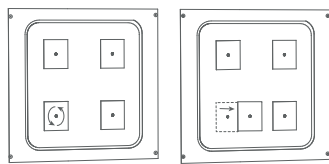
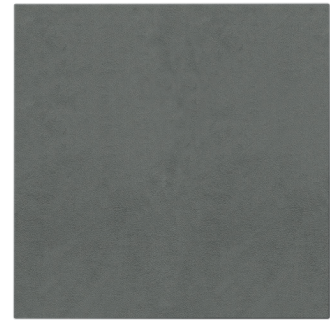
**Dimensions:**

FG - SF | 595x595x153mm  
FG - WF | 595x595x153mm

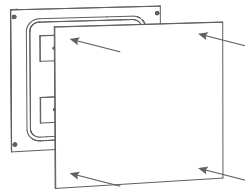


Fine-tuning possibilities

- [ 58 Hz ]
- [ 66 Hz ]
- [ 67 Hz ]
- [ 69 Hz ]
- [ 70 Hz ]
- [ 72 Hz ]
- [ 74 Hz ]
- [ 77 Hz ]
- [ 78 Hz ]
- [ 82 Hz ]



**1** Select the weight layout to tune the bass trap to your desired frequency range.



**2** Clip the front of the panel in to the bass trap body, leaving easy access to the membrane.

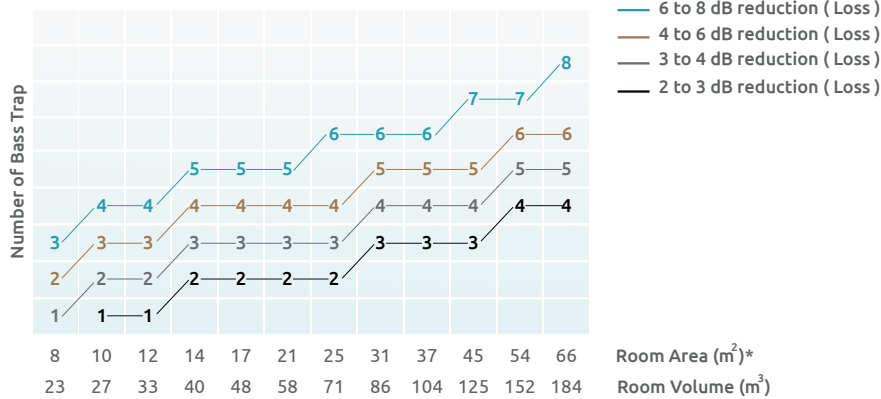
### Purpose

- Room mode control
- Bass ratio control
- Low frequency RT reduction
- Improving low frequency response
- Reducing low frequency time decay

### Recommended for

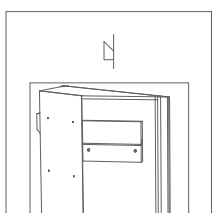
- Control Room
- Recording Room
- Home Studio
- Broadcast Studio
- Production Room
- Drum Room

### Corner Bass Trap performance

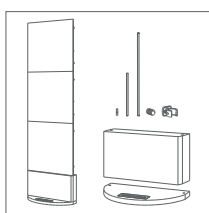


\* Ceiling height from 2,7 to 3m

### Fixing System



Integrated fixing system



Kit Mobile Wall

Product finishes

(FG - SF) Suede Fabric Finishes



(FG - WF) Weave Fabric Finishes

